



Elite Home Series Standard Features

EXTERIOR:

- 36" x 80" six panel inswing fiberglass front door (with deadbolt, peephole & knocker)
- 32" inswing fiberglass rear door with 9-lite window
- Vinyl frame - dual paned, low "e" windows
- Single hung main windows
- 7-1/2' sidewall with vaulted ceiling
- SmartSide exterior siding with 5/50 year limited warranty
- Exterior house wrap underneath siding
- Hand rolled satin exterior paint
- 2" x 6" - exterior wall studs 16" on center
- 2" x 4" rough sawn trim - all windows & doors
- 2" x 8" rough sawn fascia
- 3/12 roof pitch on vaulted ceilings
- 20 lb roof load - engineered trusses
- 1-1/2" thick by 16" tall LVL engineered ceiling ridge beam
- 25 year warranty - 3 tab roof shingles
- 15lb. rolled roofing felt
- 7/16" OSB roof sheathing
- 6" sidewall eaves
- 16" front and no rear overhangs
- Flush roof dormer
- 4-Rows 8-1/4" lap with board & batten above at dormer area
- Detachable hitches

INTERIOR:

- Pewter light package
- Toggle light switches
- 2" x 4" interior wall studs
- Tape & textured ceiling & walls
- Primed & painted interior walls
- White interior wall paint
- Rounded drywall corners
- 2-panel interior passage & wardrobe doors
- Picture framed window returns with 2-1/4" colonial trim
- Colonial door casing 2-1/4"
- Pre-hung interior doors
- 3/4" pine door jambs
- Three heavy duty hinges on passage doors
- Round door knobs with brushed nickel finish
- Wood closet shelves with pole
- Baseboards - 3-1/4" colonial throughout
- Vinyl floor in wet areas

- Vinyl floor at entryway
- Water seal protected floors in wet areas
- Plush stain resistant carpet
- 7/16" 4lb. carpet pad
- Toe kick heat registers in kitchen & bathrooms
- Silent air return
- 3/4" OSB floor decking
- 2" x 8" floor joist 16" on center
- Moisture resistant sheetrock bathrooms & wet wall in kitchen & utility
- 2" fauxwood mini blinds
- Cornice boxes above main windows
- Utility room door

KITCHEN:

- Pewter lighting, faucet, & hardware package
- Side by side refrigerator with ice & water in door
- Plumb for ice maker w/recessed supply line box
- Gas cook top
- Electric built-in oven 30"
- Microwave built-in with trim kit
- Range hood with light 30" vented to outside
- Dishwasher
- Garbage disposal 1/2 hp
- Hardwood mission style cabinet doors
- Wood screwed & glued box cabinets
- Hidden cabinet door hinges
- 3" crown molding on overhead cabinets
- Rock maple interior cabinet finish with adjustable shelves
- Steel drawer guides with rollers
- Brushed nickel knobs on cabinet doors
- Brushed nickel clamshell pulls on drawers
- Drawers over doors & a bank of drawers
- Two door overhead cabinet above refrigerator
- 33" tall overhead cabinets
- Cityscape overhead cabinets
- Stainless steel 50/50 top mount sink - 8" deep
- Water shut-off valves at sink
- Solid surface counter top & edge
- Solid surface backsplash

MASTER & GUEST BATHROOM:

- Pewter lighting, faucet, & hardware package
- China sink with overflow & pop up stopper
- 60" fiberglass oval tub/shower in master bath
- 60" fiberglass tub/shower in guest bath
- Sheetrock over tub/shower flanges

- Solid surface counter top & edge
- Solid surface backsplash
- 36" high sink cabinet in master bath only
- 42" tall mirror with j-rail installed above backsplash
- Water shut-off valves at sinks
- Water shut-off valve in wall at toilet
- Ceiling exhaust fan
- Elongated toilets
- Medicine cabinets
- Bank of drawers in both bathrooms

UTILITY & ELECTRICAL:

- Energy Star qualified home
- Insulation: ceiling R-38; walls R-19; floor R-22
- Gas/propane furnace
- 40 gallon gas/propane water heater
- Hinged exterior water heater door
- Plumb & wire for washer
- Wire for electric dryer
- Metal shut off valves at washer
- Dryer vent in wall
- Overhead shelf at washer/dryer area
- Furnace air return opening in wall above passage door
- 100 amp panel box
- Interior mounted electrical panel box
- Porch lights at all exterior doors
- Two porch lights at front door
- Programmable thermostat
- Smoke detectors hard wired with battery backup
- Carbon monoxide detector hard wired with battery backup
- Electrical boxes nailed to wall studs
- GFI electrical plugs at sink areas
- Exterior GFI plug at rear door
- Pex water lines
- Flair-it compression water line fittings
- Doorbell
- Wire for air conditioning ready
- Recessed can lights in kitchen
- Flush mount ceiling light in bathrooms
- Wire & brace for ceiling fan in living room
- Ceiling fan - ship loose
- Ceiling lights in bedrooms
- 1/10 year limited home warranty



Manufactured and Modular Home Builder Since 1995

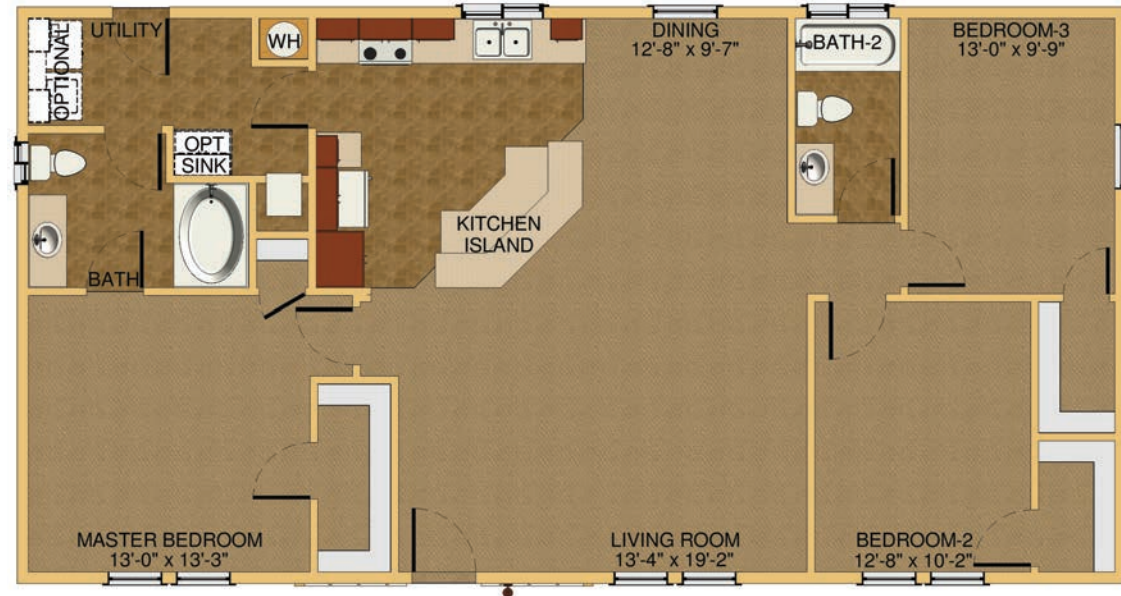


Elite Home Series

Because our company has a continuous product update process, specifications, floor plan lay-out and dimensions shown on this literature are subject to change without notice or obligations. Construction and design specifications as well as features presented are conceptual, therefore should not be used as actual construction data, and may not be offered in all series or models. Our Retailer will provide accurate, up-to-date information on available options and specifications for your home.

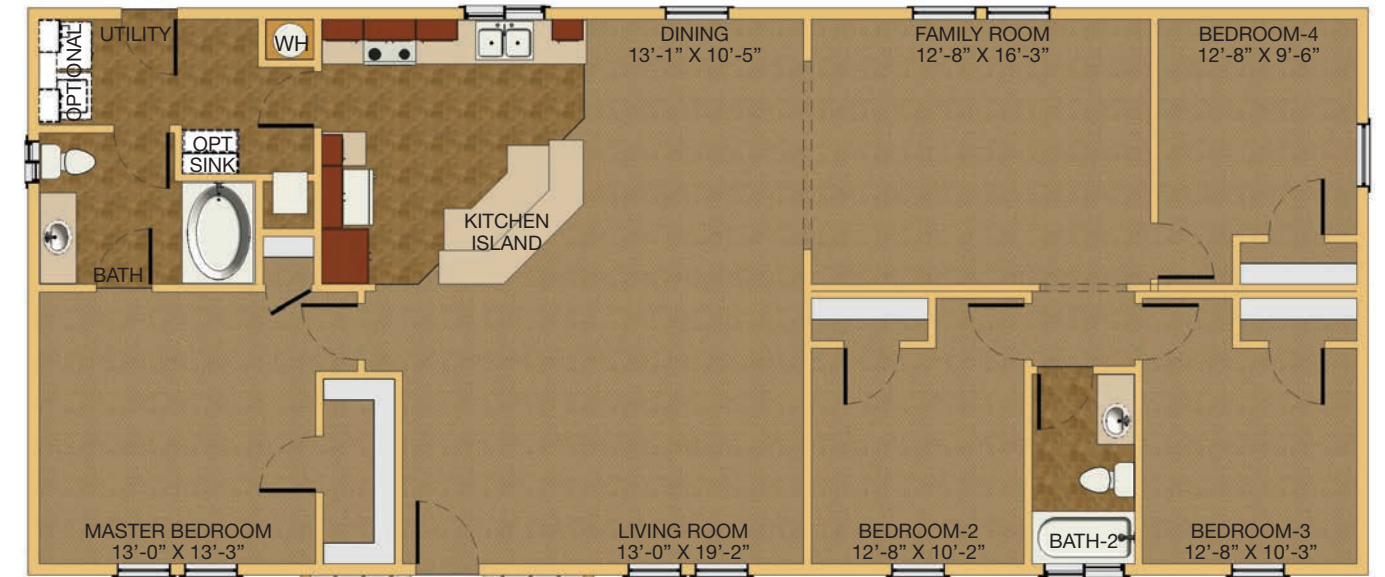
Carlisle

Model 27523A - 3 Bedrooms • 2 Bath • 1404 Square Feet • 27' x 52'



Hylton

Model 27644A - 4 Bedrooms • 2 Bath • 1728 Square Feet • 27' x 64'



Dalton

Model 27563C - 3 Bedrooms • 2 Bath • 1520 Square Feet • 27' x 56'



Lynford

Model 27663A - 3 Bedrooms • 2 Bath • 1772 Square Feet • 27' x 66'

